

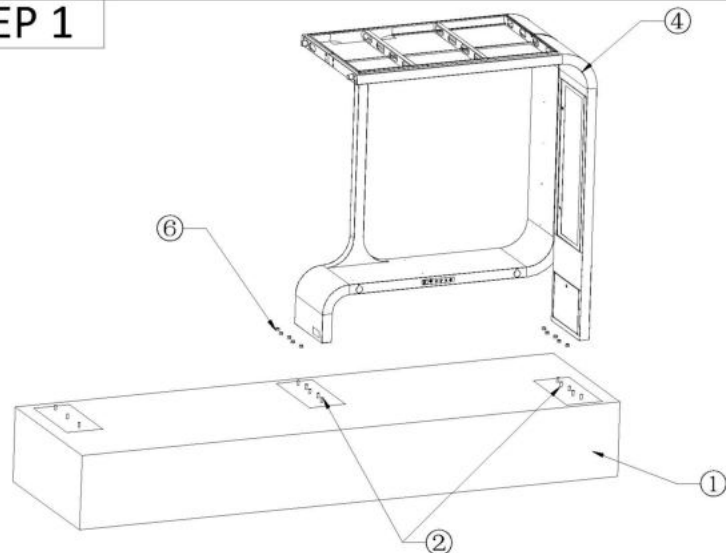
### ASSEMBLY LIST

| PART | NAME                       | DIMENSION | QUANTITY |
|------|----------------------------|-----------|----------|
| 1    | Mounting base              |           |          |
| 2    | Embedded bolt              |           | 2PCS     |
| 3    | Embedded bolt              |           | 1PC      |
| 4    | Right frame                |           | 1PC      |
| 5    | Left frame                 |           | 1PC      |
| 6    | SS nut                     | M16       | 15PCS    |
| 7    | Rubber mat                 |           | 1PC      |
| 8    | Hexagon socket head screw  | M12       | 8PCS     |
| 9    | Solar panel frame          |           | 2PCS     |
| 10   | SS phillips pan head screw | M4*10     | 28PCS    |
| 11   | Bottom door                |           | 1PC      |
| 12   | Maintenance door           |           | 1PC      |

**ADLISH**  
**WEIYIN**

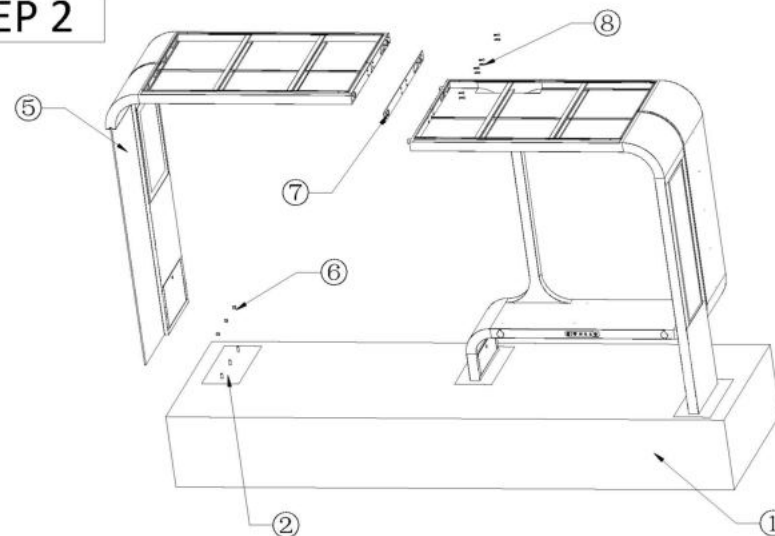
SOLAR BUS STATION MOUNTING BASE  
INSTALLATION INSTRUCTION

## STEP 1



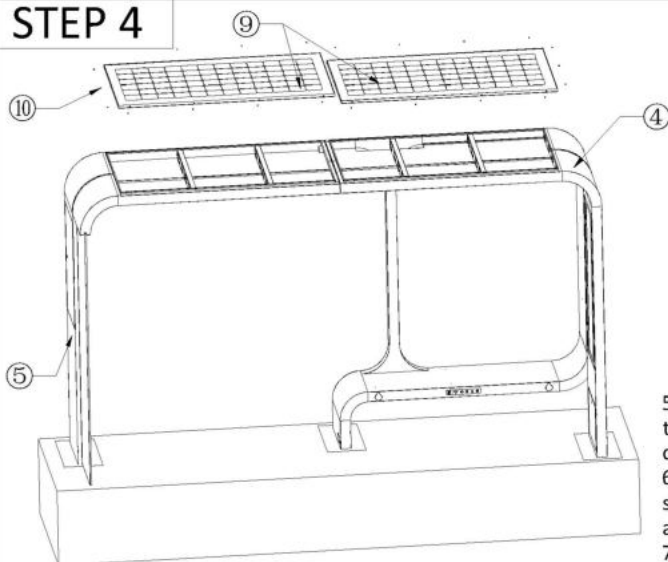
1. Select a flat surface for mounting the bus shelter main structure. Drill holes in mounting base (Item 1) in configuration shown as picture to accept bolts (Item 2 and 3).
2. Hoist the right frame of bus shelter (Item 4) and level it onto the mounting base (Item 1), fix tightly with underneath bolts (Item 2). Secure the screw caps (Item 6) using M16 nut wrench.

## STEP 2



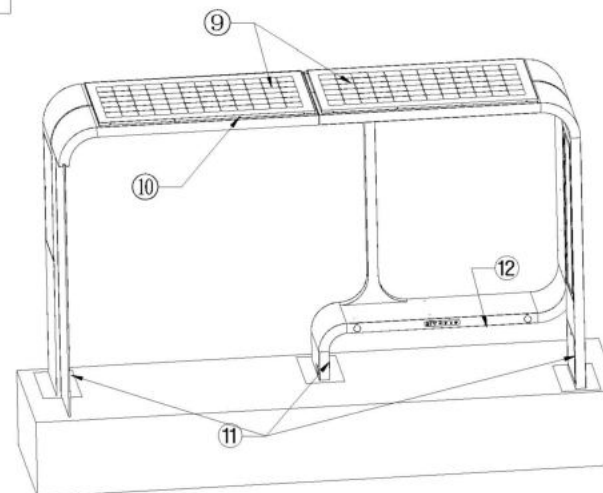
3. Align the left frame of bus shelter (Item 5) with the right part of bus shelter, with black rubber mat (Item 7) in between, secure screws (Item 8) using 10mm hex wrench. Fix the bottom tightly with underneath bolts (Item 3). Secure the screw caps (Item 6) using M16 nut wrench.
4. Make sure the cables on top of right frame of bus shelter (Item 4) go through the holes on the frame side to the left frame (Item 5).

## STEP 4



5. Put two solar panel frames (Item 9) on top and connect underneath solar panel cables together, in matching color.
6. Connect the solar panel wire connectors of both bus shelter left frame (Item 5) and bus shelter right frame (Item 4).
7. Connect the light wire connectors of both bus shelter left frame (Item 5) and bus shelter right frame (Item 4).
8. Connect the screen wire connectors of both bus shelter left frame (Item 5) and bus shelter right frame (Item 4).

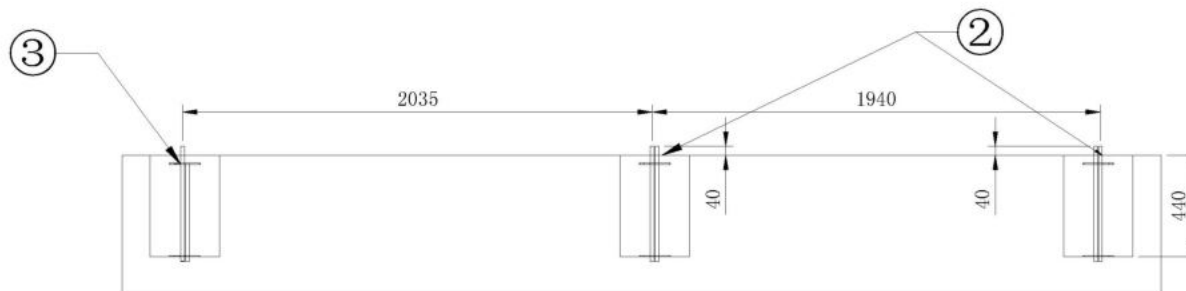
## STEP 4



9. Fix the solar panel frames. Secure the screws (Item 10) using phillip screw driver.
10. Close the three bottom doors (Item 11).
11. Open maintenance door (Item 12), ensure all screws are fixed tightly and battery is turned on to complete installation.
12. Notice: the product is rather heavy, pls use lifting equipment safely to complete the installation.

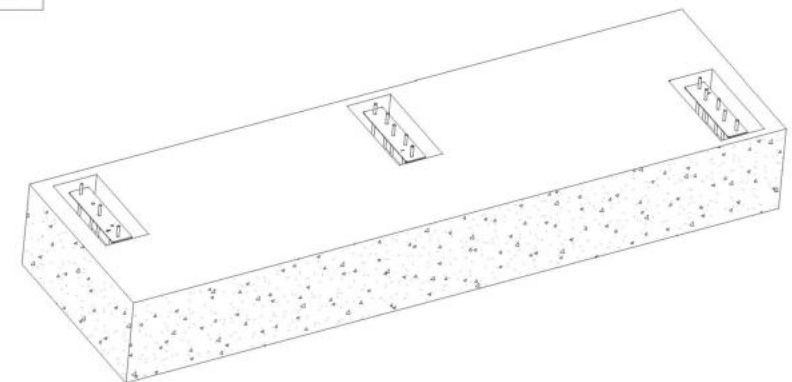
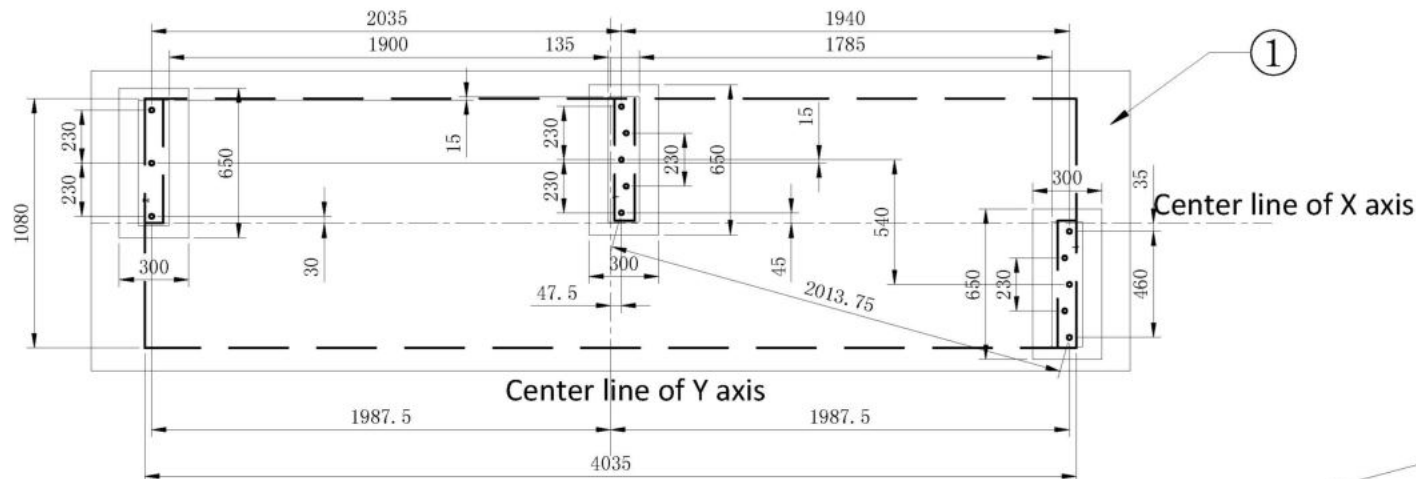
**ADLIS**  
**WEIYIN**

**SOLAR BUS STATION MOUNTING BASE  
INSTALLATION INSTRUCTION**



#### Dimension instruction

1. Toilet floor size: 4050mm\*1080mm
2. Bolt hole size: 650mm\*300mm\*depth440mm
3. Embedded bolt distance to centre:  
X axis: 2035mm,1940mm  
Y axis: 540mm, 15mm
4. Embedded concrete level above the ground: 40mm



#### Bus Station

##### Mounting base Installation Step:

1. Select a flat surface for mounting the bus station. Draw the layout of the bus station and bolt hole position on the mounting base (Item 1) in configuration shown as picture and take the center line of X / Y axis as the reference line.
2. Drill the three bolt holes in configuration shown as picture, level the bottom and make sure the depth is correct.
3. Configure anchor bolt (Item 2 and 3) into bolt holes, using bolt distance to Y axis as instructed to fix the position. Make sure all bolts shall be on the same level.
4. Fill bolt holes with concrete till same level as the ground, completed shown as the picture.
5. Install the bus station after 7 days when the concrete is completely dry.

**ADLIS**  
**WEIYIN**

SOLAR BUS STATION MOUNTING BASE  
INSTALLATION INSTRUCTION

#### ASSEMBLY LIST

| PART | NAME          | DIMENSION | QUANTITY |
|------|---------------|-----------|----------|
| 1    | Mounting base |           |          |
| 2    | Embedded bolt |           | 2PCS     |
| 3    | Embedded bolt |           | 1PC      |